

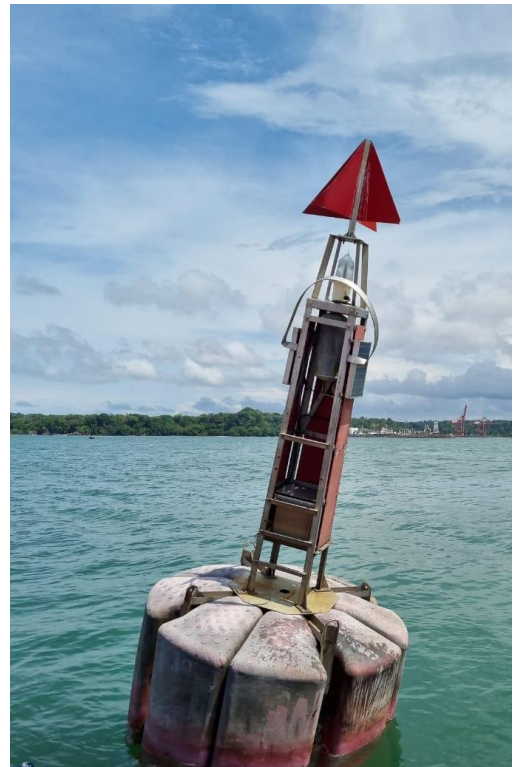
**COSTA RICA REPUBLIC, CENTRAL AMERICA
NOTICES TO MARINERS**

APRIL 20, 2021
MOPT-04-04-22-008-2021

It's communicated to the navigators in general that in the access channel of Port Complex Moín, the sinking of a TUG occurred, which represents a danger to navigation. Has been temporarily demarcated with a later mark (starboard hand –red) in the following coordinates:

10 degrees 01.330 minutes North

83 degrees 04.948 minutes West

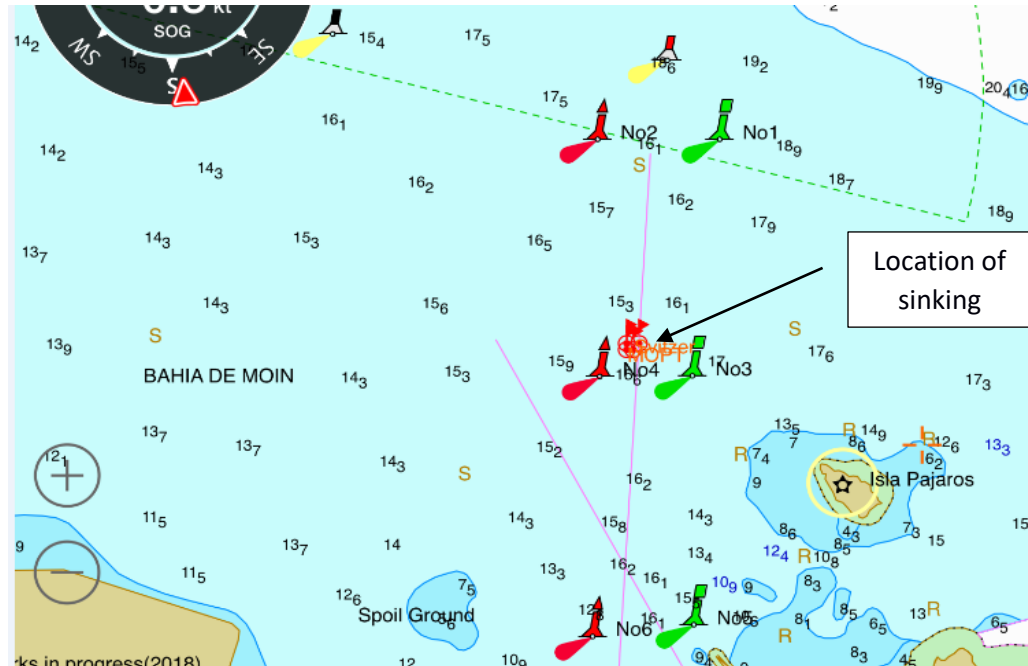


April 20, 2021

pág. 2/2

TUG JOSE MARIA WRECK COORDINATES CHART

PUNTO	NORTE (m)	ESTE (m)	LATITUD	LONGITUD	PROF. NAUFRAGIO(m)
RH	1108317.200	600587.300	10°01'19.19"	83°04'56.81"	8.79



Navigation aids: the temporary relocation of the lateral mark N°4 (red) is reported in the following coordinates:

10 degrees 01.273 minutes North
83 degrees 05.043 minutes West

Location: Central America, Costa Rica, Moín Port.

Nautical chart affected: N°1798 in section B of the Nautical Chart: Port on the Caribbean Coast of Costa Rica de la Admiralty and International Chart de la United Hydrographic Office (UKHO).

Affected publications: Lights list N° 11 USA.

Information origin: División Marítimo Portuaria, Ministerio de Obras Públicas y Transportes, MOPT.

Bathymetric plane: MOPT-04-03-17-001-2021 "Extended survey northwest sector of the Access channel of the Moín Port Complex" Scale 1.2500, PDF file.

Link: <https://www.mopt.go.cr/wps/wcm/connect/dd5344ef-e430-4927-a142-cd5989d95770/MOPT-04-03-17-001-2021.pdf?MOD=AJPERES>